

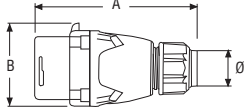


Dimensions

Inlet – Provided in inches and millimeters

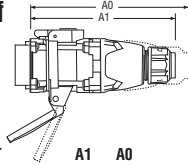
Dimensions are for reference only

Plug



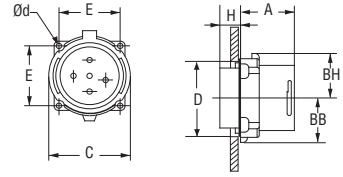
PRODUCT	A	B	Ø
	5.67	2.76	.32-.90
DS20/DS24	144	70	8-23
	5.83	3.23	.32-1.25
DS30/DS37	148	82	8-32
	6.89	3.86	.55-1.53
DS60/DS100C/DS7	175	98	14-39
	7.68	4.92	1.00-1.75
DS100	195	125	25-45
	10.24	5.55	1.50-2.25
DS200	260	141	40-58

Inlet with connector on/off



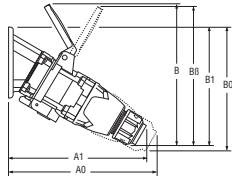
PRODUCT	A1	A0
	6.54	7.17
DS20/DS24	166	182
	6.85	7.48
DS30/DS37	174	190
	7.76	8.70
DS60/DS100C/DS7	197	221
	9.69	10.83
DS100	246	275
	12.20	13.43
DS200	310	341

Inlet



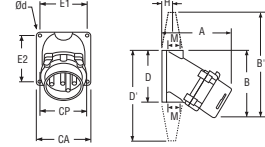
PRODUCT	A	BB	BH	C	D	E	H	Ød
	1.89	1.28	1.46	2.62	2.28	1.89	0.55	0.20
DS20/DS24	48	32.5	37	66.5	58	48.1	14	5.0
	2.05	1.48	1.75	3.07	2.76	2.17	0.71	0.20
DS30/DS37	52	37.5	44.5	78	70	55.1	18	5
	2.20	1.77	2.09	3.62	3.15	2.59	1.06	0.22
DS60/DS100C/DS7	56	45	53	92	80	65.8	27	5.5
	2.80	2.40	2.52	4.45	3.94	3.20	1.02	0.24
DS100	71	61	64	113	100	81.3	26	6
	3.11	2.87	2.68	5.12	4.65	3.86	1.57	0.26
DS200	79.0	73	68	130	118	98	40	6.5

30° inclined inlet/angle with connector on/off



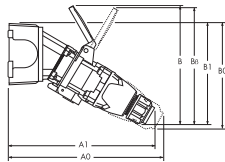
PRODUCT	A1	A0	B	B1	B0	BB
	7.56	8.11	7.24	6.69	7.01	7.83
DS20/DS24	192	206	184	170	178	199
	7.99	8.54	8.46	7.01	7.32	8.46
DS30/DS37	203	217	215	178	189	215
	9.02	9.84	9.76	8.35	8.82	10.00
DS60/DS100C/DS7	229	250	248	212	224	254
	11.89	12.87	12.24	9.53	10.12	
DS100	302	327	311	242	257	
	11.50	12.13	16.81	13.66	14.72	
DS200 60°	292	308	427	347	374	

30° inlet/conduit box



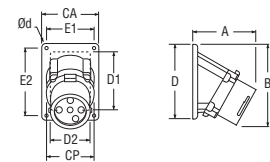
PRODUCT	A	B	CA	CP	D	E1	E2	H	PG	Ød
	4.37	4.13	3.31	2.64	3.31	2.76	2.76	0.69	0.50	0.24
DS20/DS24	111	105	84	67	84	70	70	17.5		6
	5.08	4.96	3.50	2.60	3.94	3.03	3.46	0.94	0.75	0.26
DS30/DS37	129	126	89	66	100	77	88	24		6.5
	6.69	6.22	4.13	3.62	5.04	3.50	4.41	1.22	1.25	0.30
DS60/DS100C/DS7 poly	170	158	105	92	128	89	112	31		7.5

30° inclined inlet/angle/junction box with connector on/off



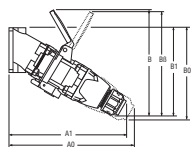
PRODUCT	A1	A0	B	B1	B0	BB
	10.04	10.59	7.24	6.81	7.13	7.83
DS20/DS24	255	269	184	173	181	199
	10.59	11.02	8.46	7.13	7.44	8.46
DS30/DS37	269	280	215	181	189	215
	12.09	12.91	9.76	8.54	9.02	10.00
DS60/DS100C/DS7	307	328	248	217	229	254
	15.51	16.50	12.24	9.53	10.12	
DS100	394	419	311	242	257	
	15.67	16.30	16.81	13.66	14.72	
DS200 60°	398	414	427	347	374	

30° inlet/angle



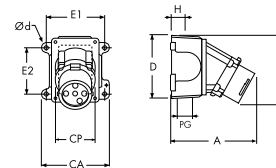
PRODUCT	A	B	CA	CP	D	D1	D2	E1	E2	Ød
	3.62	4.49	2.99	2.64	4.21	2.56	2.44	2.48	3.74	0.22
DS20/DS24	92	114	76	67	107	65	62	63	95	5.5
	3.94	4.72	2.99	2.60	4.21	2.56	2.68	2.48	3.74	0.22
DS30/DS37	100	120	76	66	107	65	68	63	95	5.5
	4.29	5.75	4.02	3.62	5.35	4.372	3.54	3.44	4.80	0.26
DS60/DS100C/DS7	109	146	102	92	136	111	90	87.3	122	6.5
	6.02	6.26	5.51	4.45	5.59	4.33	3.94	4.87	4.87	0.28
DS100	153	159	140	113	142	110	100	123.8	123.8	7.0
	6.93	8.90	7.20	5.12	7.20	5.91	5.91	6.50	6.50	0.28
DS200 60°	176	226	183	130	183	150	150	165	165	7.0

30° inclined inlet/conduit box with connector on/off



PRODUCT	A1	A0	B	B1	B0	BB
	8.31	8.86	7.24	6.34	6.65	7.83
DS20/DS24	211	225	184	161	169	199
	9.13	9.69	8.46	7.24	7.56	8.46
DS30/DS37	232	246	215	184	192	215
	11.14	11.97	9.76	8.66	9.13	10.00
DS60/DS100C/DS7 poly	283	304	248	220	232	254

inlet/angle/metal junction box



PRODUCT	A	B	CA	CP	D	E1	E2	H	PG	Ød
	6.10	4.61	4.40	2.64	4.57	3.75	2.78	1.18	1.00	0.25
DS20/DS24	155	117	111.8	67	116	95.3	70.6	30		6.4
	6.42	4.84	4.40	2.60	4.57	3.75	2.78	1.18	1.00	0.25
DS30/DS37	163	123	111.8	66	116	95.3	70.6	30		6.4
	7.36	5.94	5.75	3.62	5.81	5.00	3.82	1.57	1.50	0.30
DS60/DS100C/DS7	187	151	146	92	147.5	127	97	40		7.5
	9.65	6.26	7.54	4.45	5.65	6.62	4.24	1.93	2.00	0.31
DS100	245	159	191.5	113	143.5	168.1	107.7	49		7.8
	11.10	8.90	8.94	5.12	7.32	8.25	6.38	2.05	2.50	0.33
DS200 60°	282	226	227	130	186	209.6	162	52		8.4

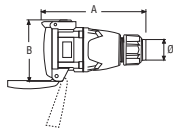
Dimensions

Receptacle – Provided in inches and millimeters

DS

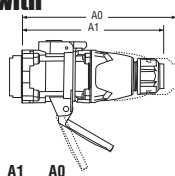
Dimensions are for reference only

connector



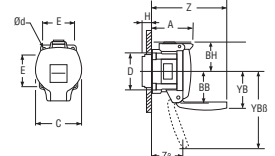
PRODUCT	A	B	Ø
DS20/DS24	6.30 160	3.74 95	.32-.90 8-23
DS30/DS37	6.50 165	4.25 108	.32-1.25 8-32
DS60/DS100C/DS7	7.05 179	4.84 123	.55-1.53 14-39
DS100	8.94 227	5.71 145	1.00-1.75 25-45
DS200	11.46 291	6.57 167	1.50-2.25 40-58

receptacle with plug on/off



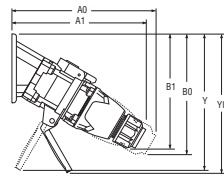
PRODUCT	A1	A0
DS20/DS24	6.54 166	7.17 182
DS30/DS37	6.85 174	7.48 190
DS60/DS100C/DS7	7.76 197	8.70 221
DS100	9.69 246	10.83 275
DS200	12.20 310	13.43 341

receptacle



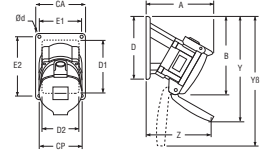
PRODUCT	A	BB	BH	C	D	E	H	YB	YBB	Z	ZB	Ød
DS20/DS24	2.56 64.9	1.97 50	1.77 45	2.72 69	2.28 58	1.89 48.1	0.59 15	2.56 65	4.25 108	4.75 120.6	2.99 75.9	0.20 5
DS30/DS37	2.70 68.6	2.15 54.5	2.11 53.5	3.15 80	2.76 70	2.17 55.1	0.83 21	3.94 100	5.20 132	4.76 121	2.26 57.5	0.20 5
DS60/DS100C/DS7	3.00 76.2	2.46 62.5	2.36 60	3.86 98	3.15 80	2.59 65.8	1.06 27	4.33 110	5.98 152	5.76 146.2	3.41 86.7	0.22 5.5
DS100	4.45 113.1	2.95 75	2.76 70	4.45 113	3.94 100	3.20 81.3	0.94 24	5.39 137	7.76 197.1	7.76 197.1	0.24 6	
DS200	4.31 109.5	2.95 75	3.62 92	5.16 131	4.65 118	3.86 98	1.50 38	4.53 115	8.38 212.9	8.38 212.9	0.26 6.5	

30° inclined receptacle/angle with plug on/off



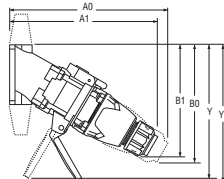
PRODUCT	A1	A0	B1	B0	Y	YB
DS20/DS24	7.56 192	8.11 206	6.69 170	7.01 178	7.24 184	7.80 198
DS30/DS37	7.99 203	8.54 217	7.01 178	7.32 186	8.27 210	8.27 210
DS60/DS100C/DS7	9.02 229	9.84 250	8.35 212	8.82 224	10.00 254	10.28 261
DS100	11.89 302	12.87 327	9.53 242	10.12 257	11.77 299	
DS200 60°	11.50 292	12.13 308	13.66 347	14.72 374	11.54 293	

30° receptacle/angle



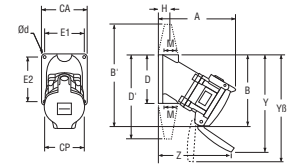
PRODUCT	A	B	CA	CP	D	D1	D2	E1	E2	Y	YB	Z	Ød
DS20/DS24	4.57 116	5.39 137	2.99 76	2.72 69	4.21 107	2.56 65	2.44 62	2.48 63	3.74 95	7.24 184	7.80 198	4.29 109	0.22 5.5
DS30/DS37	4.92 125	5.71 145	2.99 76	3.15 80	4.21 107	2.56 65	2.68 68	2.48 63	3.74 95	8.27 210	8.27 210	4.29 109	0.22 5.5
DS60/DS100C/DS7	5.43 138	6.97 177	4.02 102	3.86 98	5.35 136	4.37 111	3.54 90	3.44 87.3	4.80 122	10.00 254	10.28 261	4.49 114	0.26 6.5
DS100	7.87 200	7.80 198	5.51 140	4.45 113	5.59 142	4.33 110	3.94 100	4.87 123.8	4.87 123.8	11.77 299	11.77 299	6.65 169	0.28 7
DS200 60°	8.78 223	9.80 249	7.20 183	5.16 131	7.20 183	5.91 150	5.91 150	6.50 165	6.50 165	14.96 380	14.96 380	3.78 96	0.28 7

30° inclined receptacle/conduit box with plug on/off



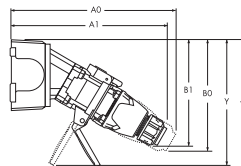
PRODUCT	A1	A0	B1	B0	Y	YB
DS20/DS24	8.31 211	8.86 225	6.34 161	6.65 169	6.89 175	7.44 189
DS30/DS37	9.13 232	9.69 246	7.24 184	7.56 192	8.50 216	8.50 216
DS60/DS100C/DS7	11.14 283	11.97 304	8.66 220	9.13 232	10.31 262	10.59 269

30° receptacle/conduit box



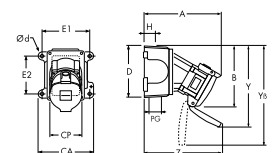
PRODUCT	A	B	CA	CP	D	E1	E2	H	PG	Y	YB	Z	Ød
DS20/DS24	5.31 135	5.04 128	3.31 84	2.72 69	3.31 84	2.76 70	2.76 70	0.69 17.5	0.50 12.7	6.89 175	7.44 189	5.04 128	0.24 6
DS30/DS37	6.06 154	5.94 151	3.50 89	3.15 80	3.94 100	3.03 77	3.46 88	0.94 24	0.75 19.0	8.50 216	8.50 216	5.08 129	0.26 6.5
DS60/DS100C/DS7 poly	7.56 192	7.28 185	4.13 105	3.86 98	5.04 128	3.50 89	4.41 112	1.22 31	1.25 31	10.31 262	10.59 269	6.61 168	0.30 7.5

30° inclined receptacle/angle/junction box with plug on/off



PRODUCT	A1	A0	B1	B0	Y	YB
DS20/DS24	10.04 255	10.59 269	6.81 173	7.13 181	7.36 187	7.91 201
DS30/DS37	10.47 266	11.02 280	7.13 181	7.44 189	8.39 213	8.39 213
DS60/DS100C/DS7	12.09 307	12.91 328	8.54 217	9.02 229	10.20 259	10.47 266
DS100	15.51 394	16.50 419	9.53 242	10.12 257	11.77 299	
DS200 60°	15.67 398	16.30 414	13.66 347	14.72 374	11.54 293	

receptacle/angle/metal junction box



PRODUCT	A	B	CA	CP	D	E1	E2	H	PG	Y	YB	Z	Ød
DS20/DS24	7.05 179	5.51 140	4.40 111.8	2.72 69	4.57 116	3.75 95.3	2.78 70.6	1.18 30	1.00 187	7.36 201	7.91 201	6.77 172	0.25 6.4
DS30/DS37	7.40 188	5.83 148	4.40 111.8	3.15 80	4.57 116	3.75 95.3	2.78 70.6	1.18 30	1.00 213	8.39 213	8.39 213	6.77 172	0.25 6.4
DS60/DS100C/DS7	8.50 216	7.17 182	5.75 146	3.86 98	5.81 147.5	5.00 127	3.82 97	3.82 40	1.50 40	10.20 259	10.47 266	7.56 192	0.30 7.5
DS100	11.50 292	7.80 198	7.54 191.5	4.45 113	5.65 143.5	6.62 168.1	4.24 107.7	1.93 49	2.00 299	11.77 299	11.77 299	10.28 261	0.31 7.8
DS200 60°	12.95 329	9.80 249	8.94 227	5.16 131	7.32 186	8.25 209.6	6.38 162	2.05 52	2.50 380	14.96 380	14.96 380	11.89 302	0.33 8.4